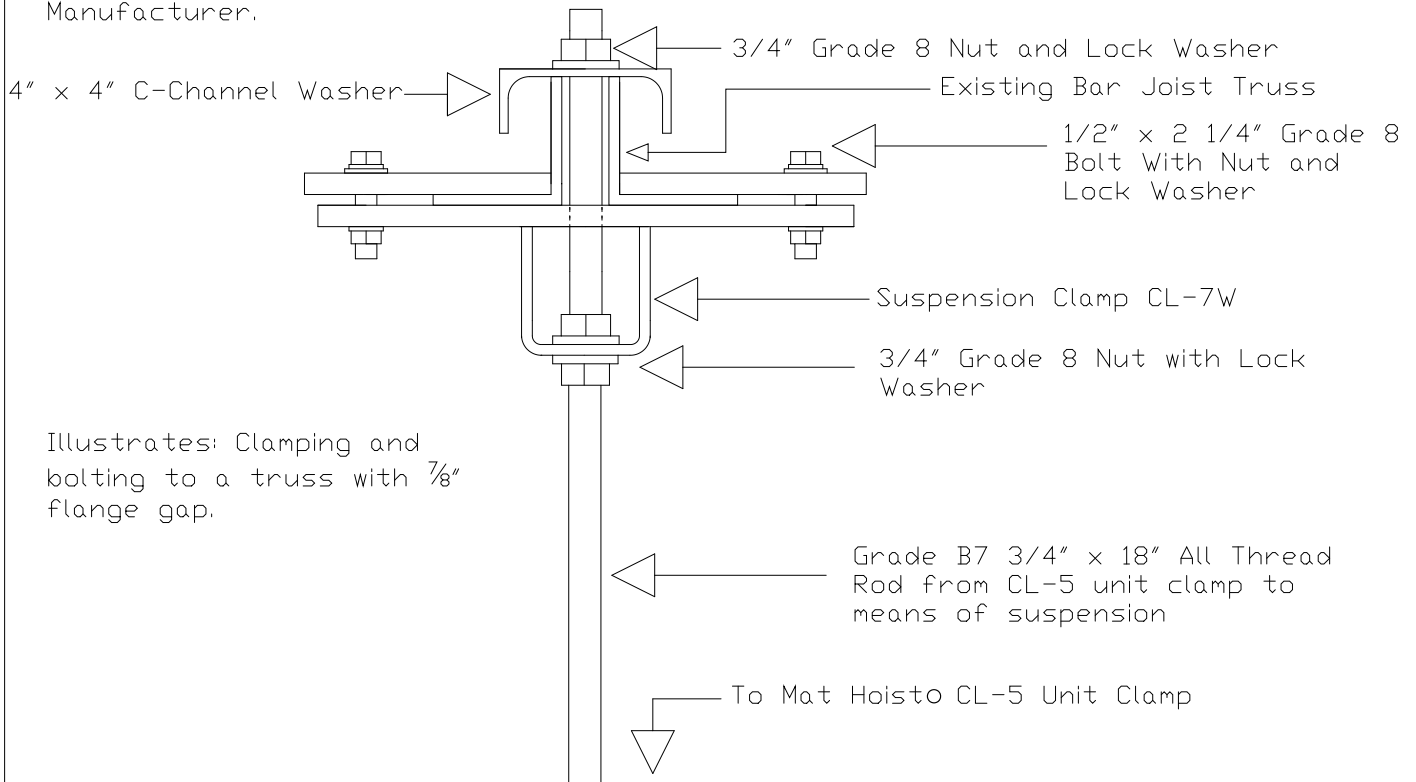


Note: Structural Strength of Truss & Wall NOT Responsibility of Mat Hoisto Manufacturer.



Illustrates: Clamping and bolting to a truss with 7/8" flange gap.

NGE Inc.
P.O. Box 370/Industrial Park
302 North Erickson
Roland, IA 50236

Mat Hoisto 500
CL - 7W Clamp
MH500-07

Phone: (515)-388-4118
Fax: (515) 388-4340
Email: mathoist@mathoist.com
Website: www.mathoist.com